

Quick Guide GPS Meter

This little guide can be used in addition to the integrated GPSMeter help file.

1. Basic settings PDA

Make sure, that all other applications are closed.

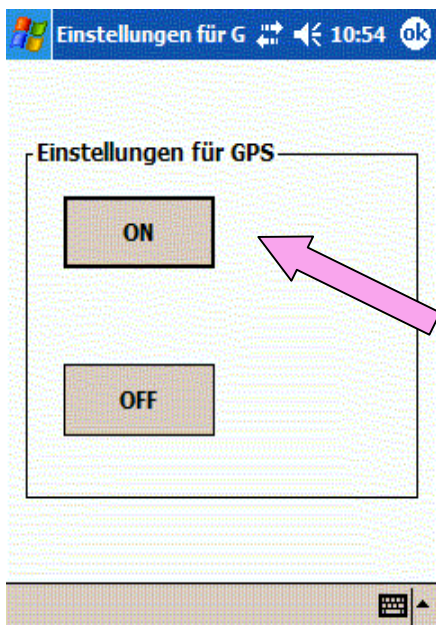
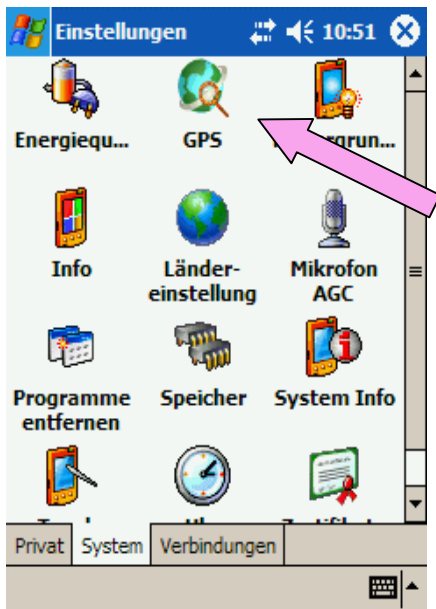
Start / System/ Settings / Memory / Running Programs / **Stop All**
or if you are not sure, make a **Softreset**



All details referring to versions
GPSMeter PDA 1.5 and later.

Quick Guide GPS Meter

If you are using Windows Mobile 2003 or higher, please check that the Gps-receiver is activated. (after a hard- or softreset it is guaranteed switched off)



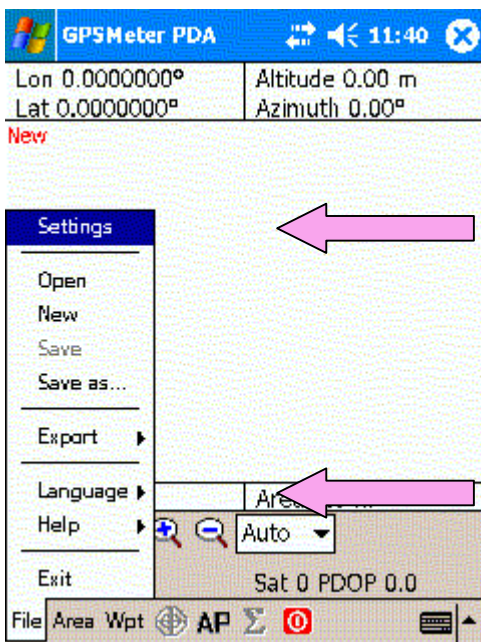
Quick Guide GPS Meter

2. Basic settings GPS Meter

Run GPSMeter PDA by clicking **Start / Programs**, or click the entry in the start menu.



Choose on start screen of GPSMeter 1. **Language**, the language you Preferring. After a restart of GPSMeter choose 2. **Settings** to do your basic Settings.



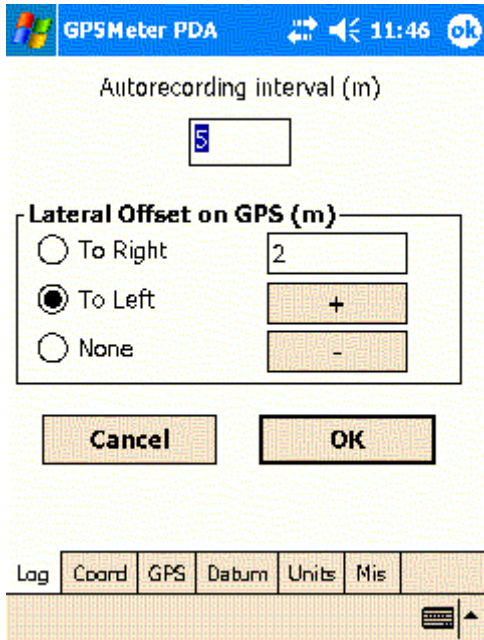
2.

1.

Quick Guide GPS Meter

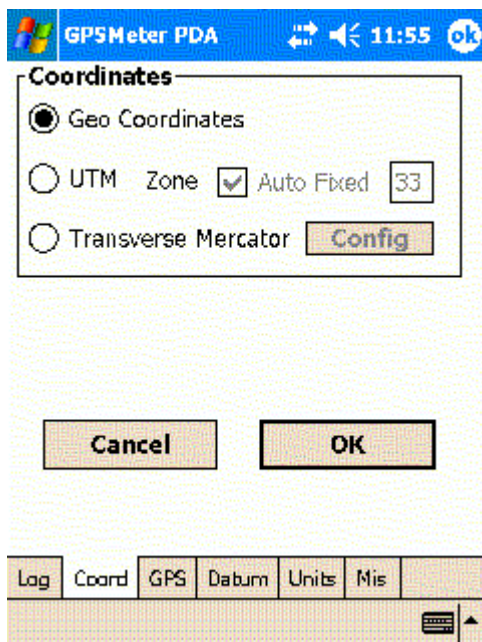
2.1. The „Log“ page.

Here you can do the settings for a lateral offset of the GPS-antenna and for the autorecording interval.



2.2 The „Coord“ page.

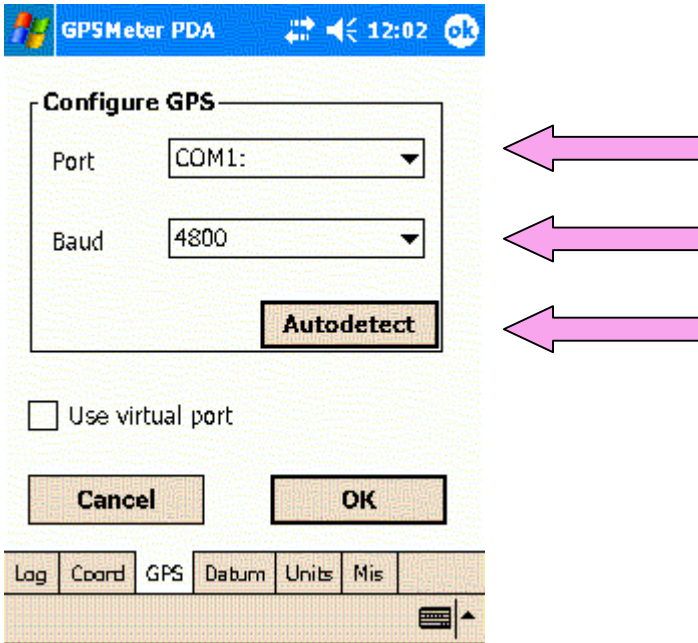
Select the format you want, using UTM, the correct zone is selected automatically.



Quick Guide GPS Meter

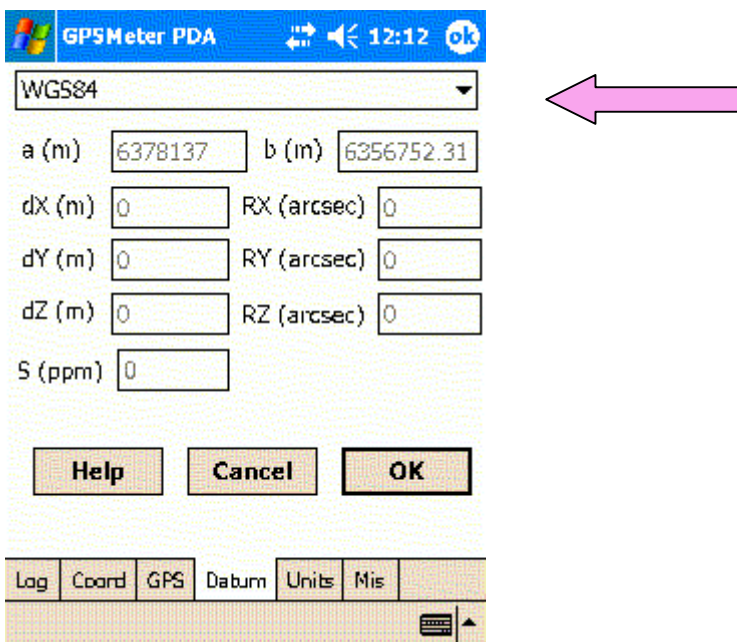
2.3 The „GPS“ page.

Select the com port and the speed for the connection between PDA and your GPS-antenna. If you don't know or there are no instructions of the manufacturer use the Autodetect-function. Caution, it takes a little bit of time!



2.4 The „Datum“ page.

Please select the mapdatum (it means a geodetic system). If you are not sure, select WGS 84, because it is the most commonly used for area measurement.

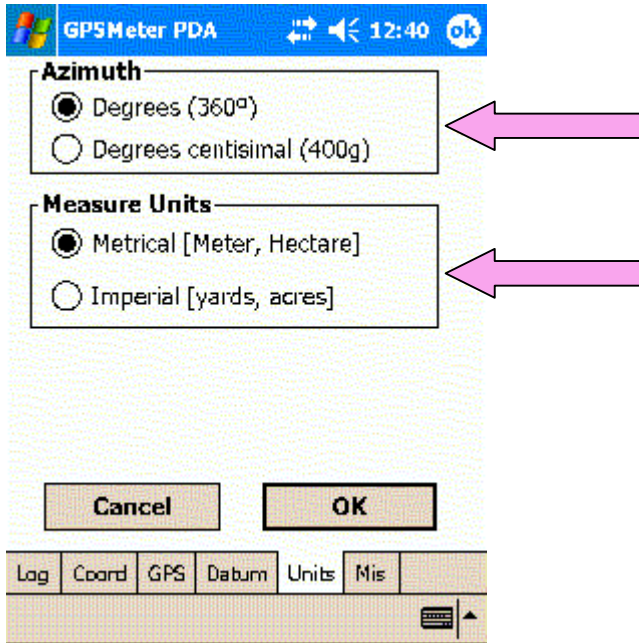


Quick Guide GPS Meter

2.5 The "Units" page.

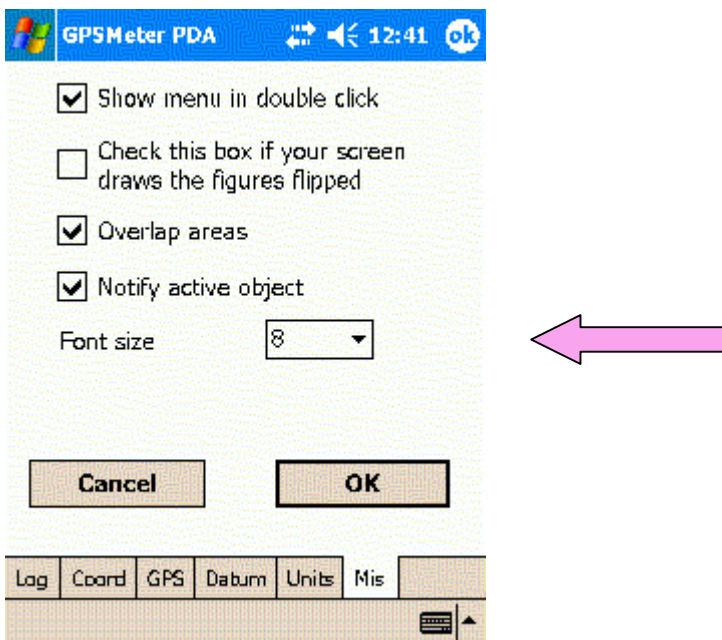
Please choose the units you want to use. Azimuth is the direction of the current movement, displayed in 360° parts of the compass.

(0° accordingly 360° to North, 90° East, 180° South e.t.c. Most used is the sub-division to 360°.



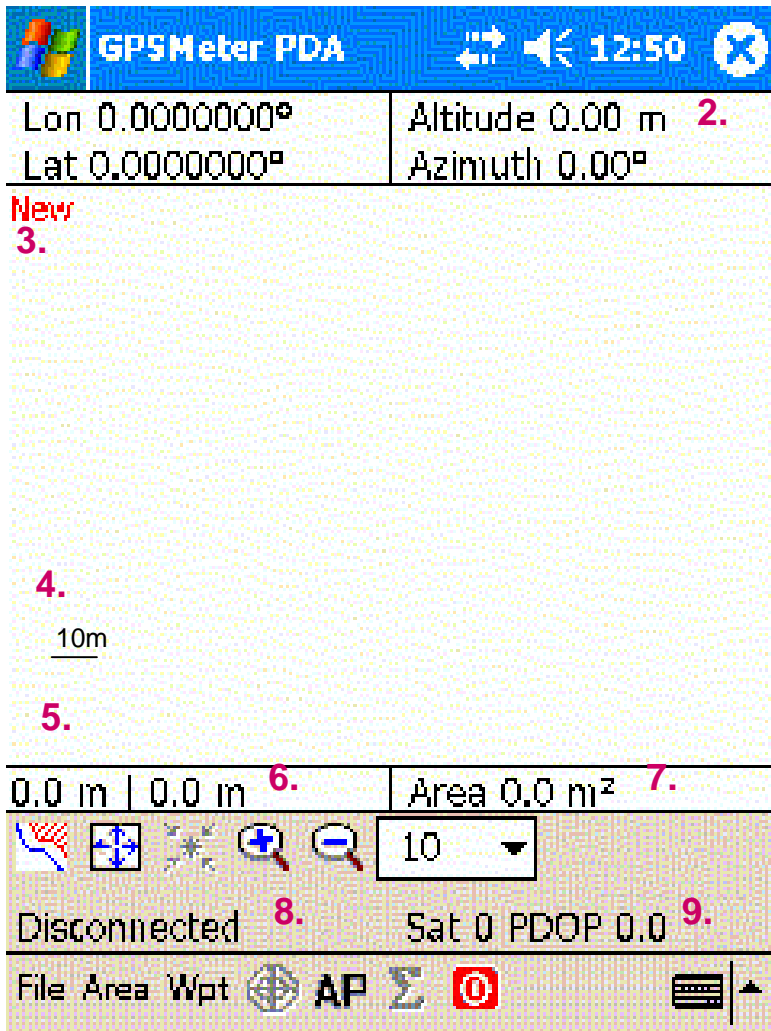
2.6 The „Mis“ page.

Mark or unmark the check boxes if you want to make changes of the display settings like the font size or other.



Quick Guide GPS Meter

The GPS Meter screen




1. Display of position(only with active Sat. connection)
2. Altitude (according to WGS 84-geoid) and current direction of movement
3. Project (have a look to Area/List/Name)
4. Scale of map grid (you can choose it in the Auto-window)
5. Distance from the last to the actual position
6. Total distance
7. Currently included area
8. Kind of GPS- Position (Fix)
9. Sats in use / Dilution of Position*
10. Menu File
11. Menu Area
12. Menu Waypoints
13. Switch to set Waypoints manually
14. Switch to set waypoints automatically
15. Switch to activate the averaging function
16. Switch to activate/ deactivate the GPS-connection

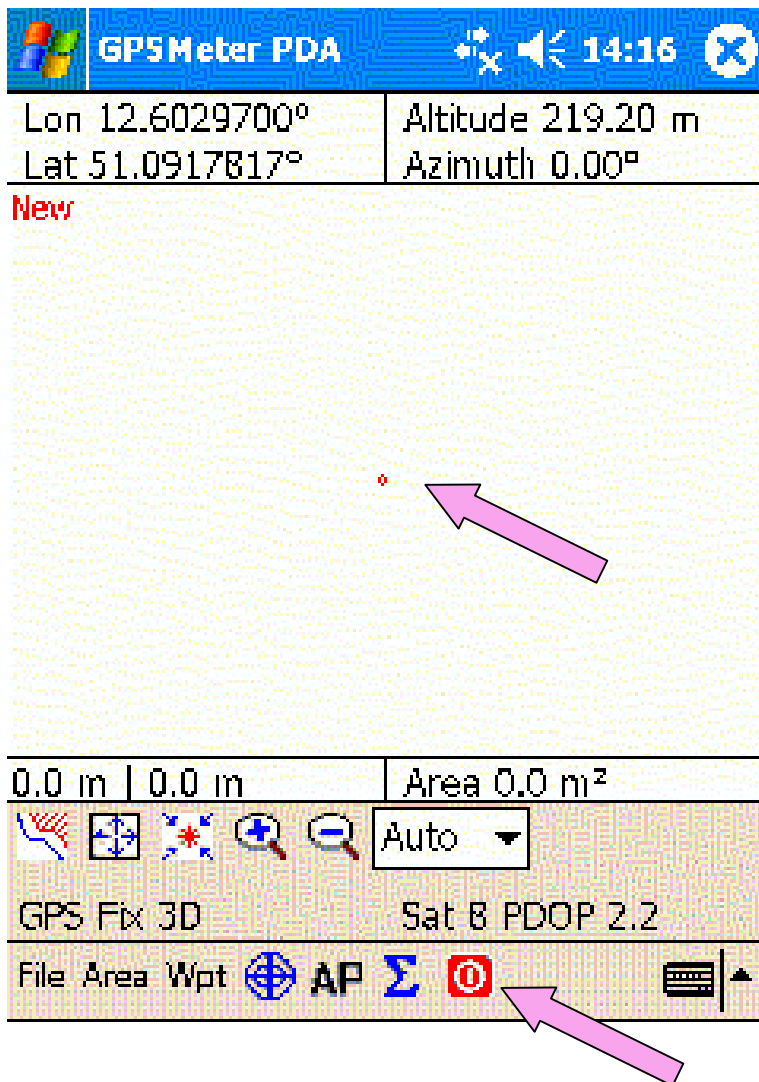
* To get good results of measurement, you should have at least 5-6 sats in use, better 8. The displayed PDOP-value is a simplified scale of the precision of your position. This value should be low as possible, at least less than 4.

Quick Guide GPS Meter

3. Measuring an area


3.1 Go to the departure point from where you want to start.

Select from Menu **File** the item **NEW** and start GPS connection clicking 
After a short time, you should see the values of Lat./ Lon. and altitude.
Your current position is displayed on the screen by a red cursor.



Quick Guide GPS Meter


3.2 Measuring

Click  to activate the autorecording mode

(The measuring points are placed to the predefined distances according to 2.1.)

And set the first point. There are two options:

a) Manually by clicking 

b) The averaging function by clicking 
Using this function the next window appears:



The displayed GPS-position is dithering a little sometimes caused by the system.

To equalize this effect GPSmeter can make an average from the positions, measuring every second to improve the accuracy within certain variations. Let your device work some seconds and hold your position. Than push the **Stop**-button and **Area**.

Confirming with **OK**, the position will be added to the current measurement and the averaging screen disappears.

If you select **Fixpoints** before confirming with **OK**, the position will be saved as a Fixpoint.

You can name or rename this points, or using it e.g. with the Navigation tool.

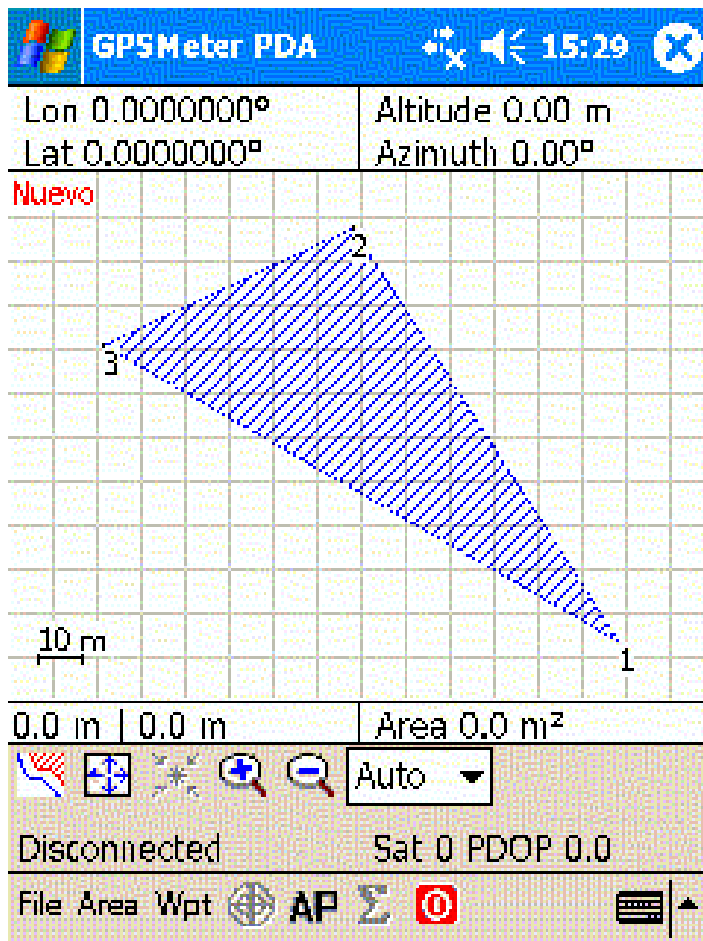
It make sense e.g. to mark important positions like a corner or something else.

Quick Guide GPS Meter

3.3 Making a break during measurement


As soon as the third position is added, the area is closed automatically and the area is displayed.

If necessary you can make a break by deactivating the autorecording mode by clicking **AP**, e.g. to overcome an obstacle.



Quick Guide GPS Meter

3.4 Complete and save a measurement

When you have finished the contour of the area and set the last point please disconnect the GPS connection. 

The display of Lat./ Lon. And altitude disappears.

Select from menu **File** the item **Save as...** And this window appears:



Choose a name.

Keep **Type** to **GPSMeter (*.gpm)**

You can change it later, by using
The **Export-function** or **GPMReport**.

As possible select as **location**, any kind
of storage card (CF or SD), to avoid
loss of data in case of a hard reset.

Confirm with **OK**.

Clicking **File – Open**, you are able to
Edit the file every time.

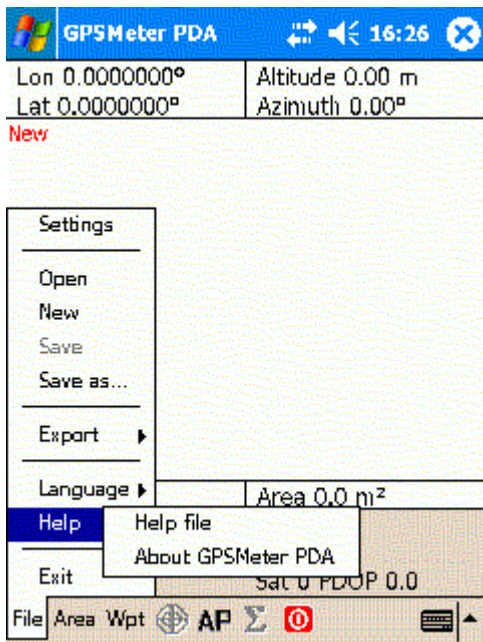
End GPSMeter by clicking **FILE – EXIT**, don't use the X button in
the right corner above to avoid problems using other applications.

Quick Guide GPS Meter

4. Additional support

These short explanation is not intended to support GPS-“experts“, rather than to „newbie“ in use of the GPS technology for purposes beyond car navigation.

More information you can get by the integrated help of GPSPeter (File- Help-Helpfile)



As well as at the site of the author:

<http://www.gpsmeter.com>

or by e-Mail :

INFO@gpsmeter.com

GPS-Meter is providing much more useful tools among the basics described here, offering additionally applications to the user.

***Have fun testing GPSPeter PDA and as much as possible
Sats in use !***